



SNOWMOBILE VERMONT

The **Natural Resources Atlas**, maintained by the Vermont Agency of Natural Resources can be a useful tool for trail planning, identifying landowners etc.

Use it to make a map for grant applications, permitting, showing landowners, etc.

The Atlas works on web browsers and mobile devices, has many layers to choose from, and allows you to upload your own trail data temporarily.

The Atlas itself is here: <https://anrmaps.vermont.gov/websites/anra5/>

And a "lite" version for slow connections: <https://anrmaps.vermont.gov/websites/anra5Lite/>

If you just want to see the trails and parcels try the e911 viewer: <https://e911.vermont.gov/maps/e911viewer>

This link will bring you to a save of the map with the e911 trails layer, wetland, vernal pools, and parcel boundaries:

https://maps.vermont.gov/anr/Html5Viewer/?viewer=ANR_ANRAv2.ANRA5&layerTheme=0&scale=72223.819286&basemap=¢er=-8077160.031592961%2C5495622.889838363&layers=1k9gFv04jtKp3uRNHY0S1Oe0023By80ZwGb%2F0hM9uQ2JUfZ13TKo5c0EvpFTOPxisc3KQDe131ZNvC0qMU5B2vMf%2By2QYey12KUH%2B2whRND1FQIH03Wbo4H1I8GyA1ZxA4s0I6GHC3dQmGK32QJYb2vSQ8s3xRUMX0sNTxe2%2BPWEI3LDRNu2NLoPE2JOSz42FCspw2BsJvy2suaUb0nAp821GHhtC0WpYe52XHMZ63oFDr%2B1dx5nk3Kg7Ae3lwnb92yjT7k0s9NuS36JXYg3OOLre3D0Udc3OOLre0G6jU90Ufodq000Gjm04NcW91gjbZo00AHIN14g5Ek2G6dvX024BcM3%2BFfm%2F0ft9Em14g5Ek0l6z0Y1y%2Fe5630tdbR1GmTwD007udU009ID03jd6%2FP0AiHNIOAw7xt1Tgtap0nR8nU2FDj872Hx3G71UWjnc1ero800R67wt1PfWpC1%2FMoj62%2B8%2FDy06kGDn1vtxnw0oB6FD33JJ9B

You can click around and become familiar with the maps many tools and functions. Three basic skills are explained in the following pages:

1. Selecting layers on the map
 - a. Note you can click around the menus, or try a filter by keywords.
2. Filtering the Trails(e911) layer to see just VAST trails
 - a. Note the e911 layer is only updated once a year, so pay attention if your trail has moved.
3. Uploading your own map data
 - a. You can use the VAST mobile app to generate a breadcrumb of your proposed route and then load it temporarily into the atlas.

Selecting layers

Layers

Atlas Layers

Search...

Quick Tools

Filter Layers...

You can filter by keyword

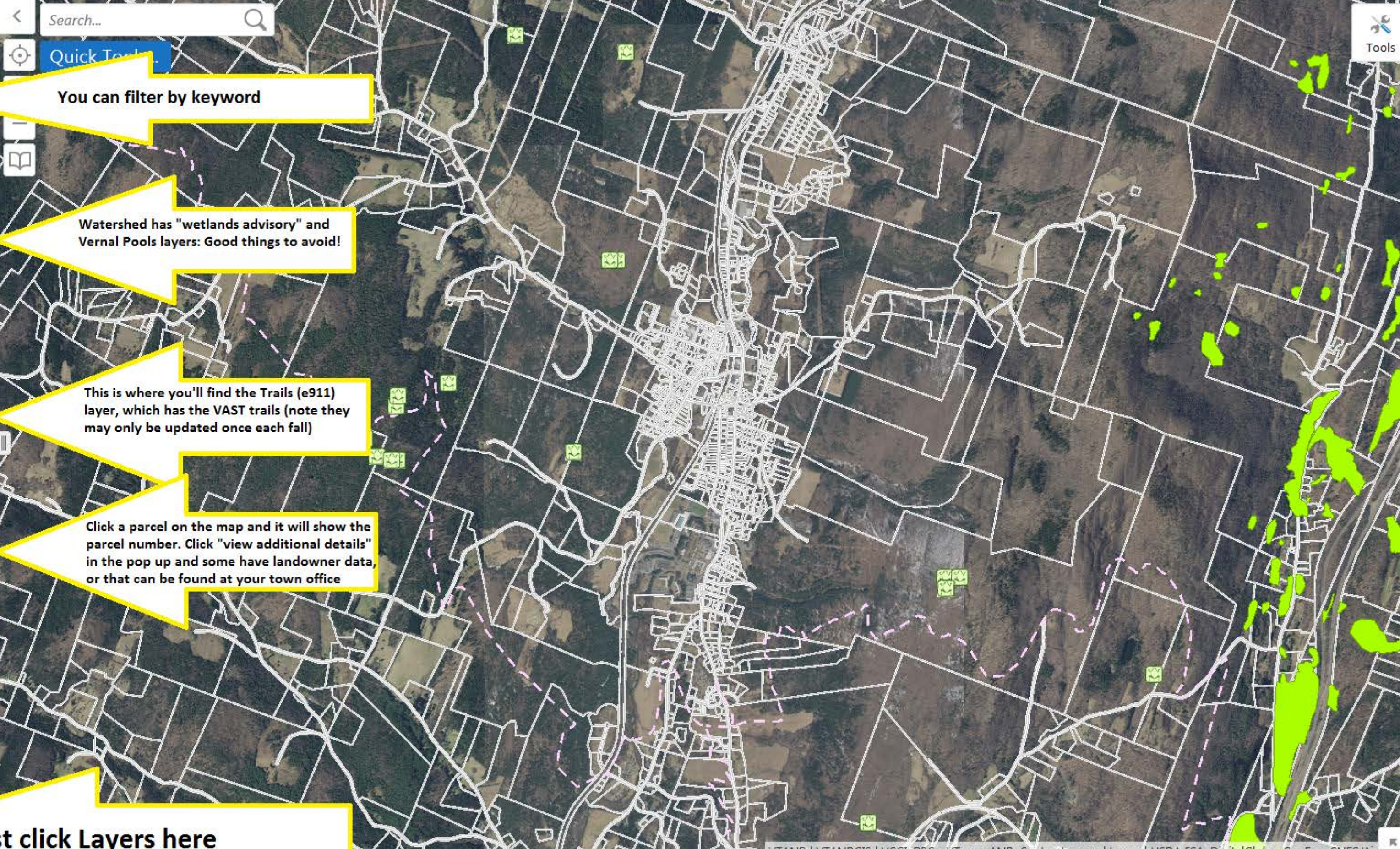
- Operational Layers
 - Contours - VCGI Map Service
- Atlas Layers
 - Watershed Management
 - Waste Management
 - Stormwater
 - Rivers
 - Geology
 - Forests Parks and Recreation
 - Fish and Wildlife
 - Drinking Water and Groundwater Protection
 - Parcels
 - ANR Basemap Data
 - Elevation Data
 - Color Imagery by Year
 - Vermont Color Orthos (current vintage)

Watershed has "wetlands advisory" and Vernal Pools layers: Good things to avoid!

This is where you'll find the Trails (e911) layer, which has the VAST trails (note they may only be updated once each fall)

Click a parcel on the map and it will show the parcel number. Click "view additional details" in the pop up and some have landowner data, or that can be found at your town office

First click Layers here



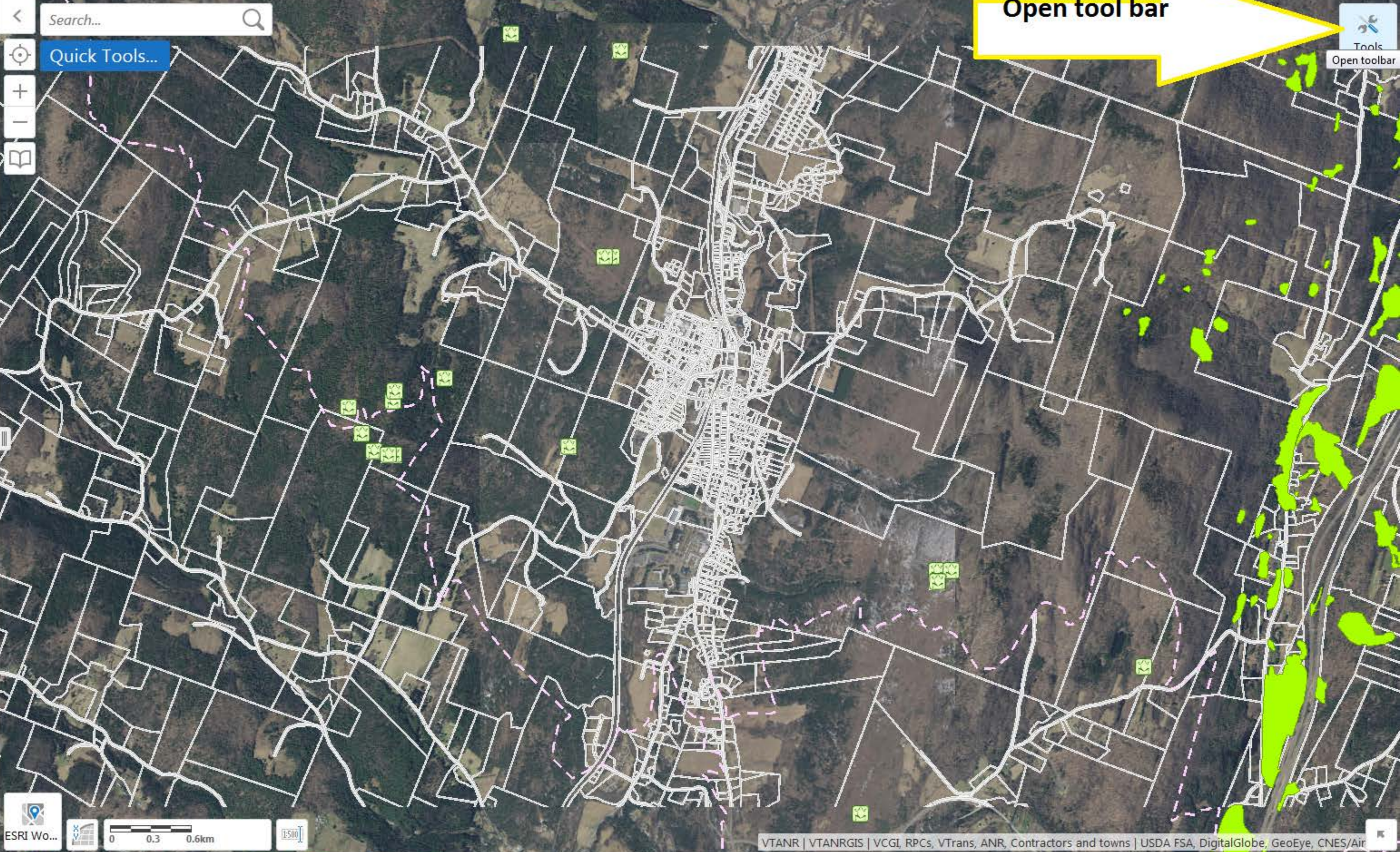
Filtering the trails to just "VAST"

Layers

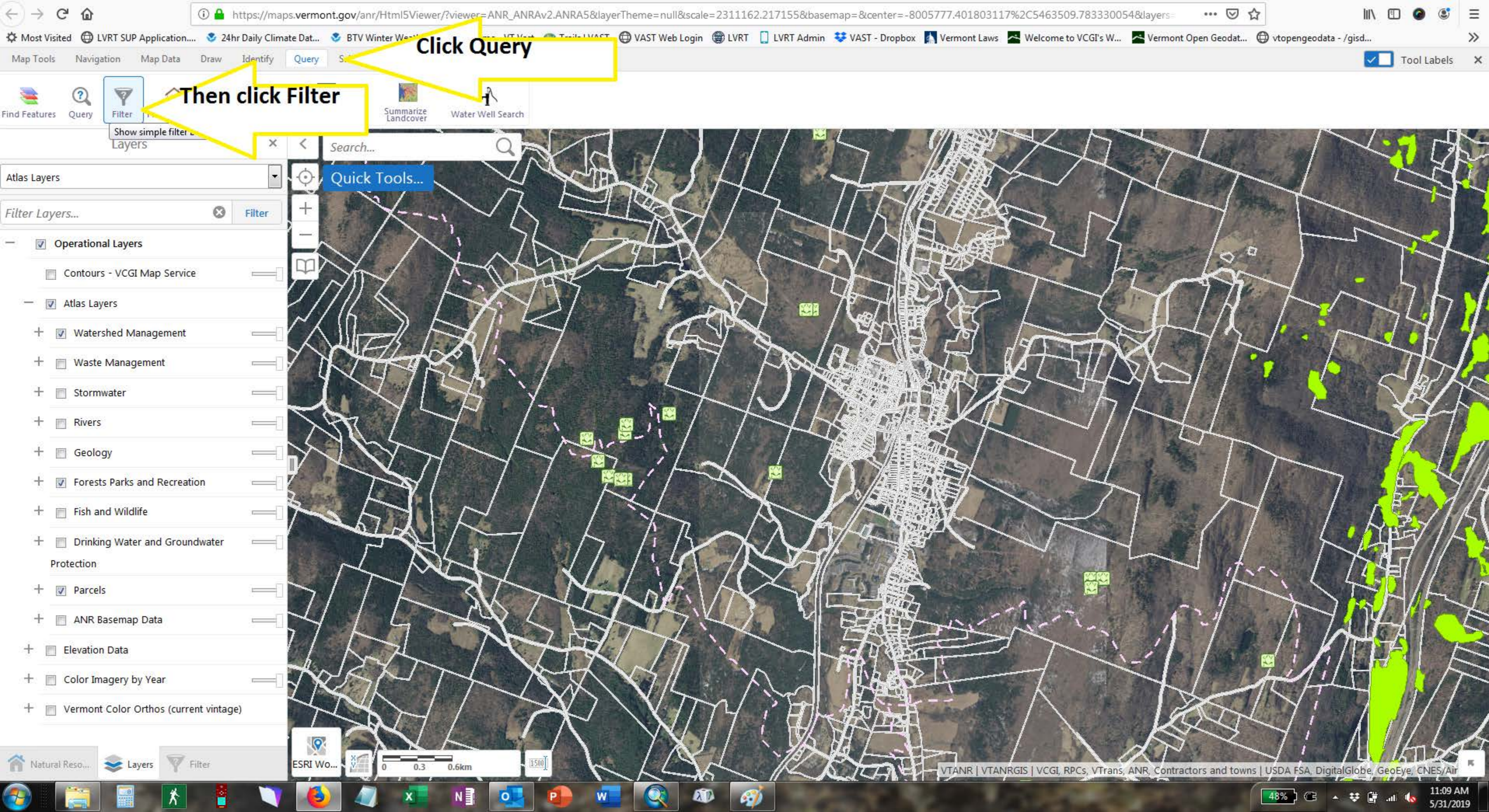
Atlas Layers

Filter Layers... Filter

- Operational Layers
 - Contours - VCGI Map Service
- Atlas Layers
 - Watershed Management
 - Waste Management
 - Stormwater
 - Rivers
 - Geology
 - Forests Parks and Recreation
 - Fish and Wildlife
 - Drinking Water and Groundwater Protection
 - Parcels
 - ANR Basemap Data
 - Elevation Data
 - Color Imagery by Year
 - Vermont Color Orthos (current vintage)



Open tool bar



Click Query

Then click Filter

Quick Tools...

Operational Layers

Contours - VCGI Map Service

Atlas Layers

Watershed Management

Waste Management

Stormwater

Rivers

Geology

Forests Parks and Recreation

Fish and Wildlife

Drinking Water and Groundwater Protection

Parcels

ANR Basemap Data

Elevation Data

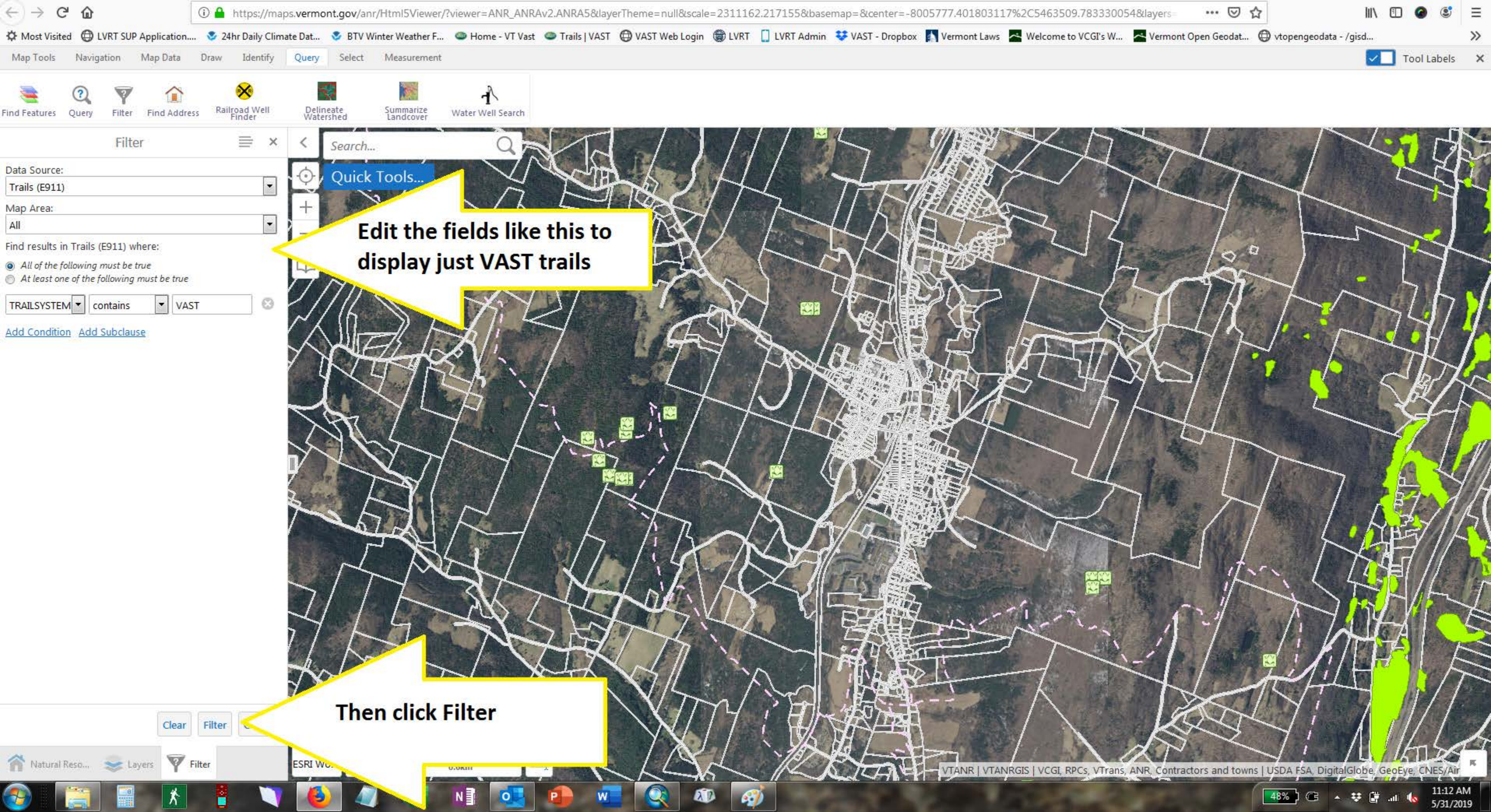
Color Imagery by Year

Vermont Color Orthos (current vintage)

Natural Reso... Layers Filter

VTANR | VTANRGIS | VCGI, RPCs, VTrans, ANR, Contractors and towns | USDA FSA, DigitalGlobe, GeoEye, CNES/Air

48% 11:09 AM 5/31/2019



Find Features Query Filter Find Address Railroad Well Finder Delineate Watershed Summarize Landcover Water Well Search

Filter

Data Source:
Trails (E911)

Map Area:
All

Find results in Trails (E911) where:
 All of the following must be true
 At least one of the following must be true

TRAILSYSTEM contains VAST

[Add Condition](#) [Add Subclause](#)

Quick Tools...

Edit the fields like this to display just VAST trails

Then click Filter

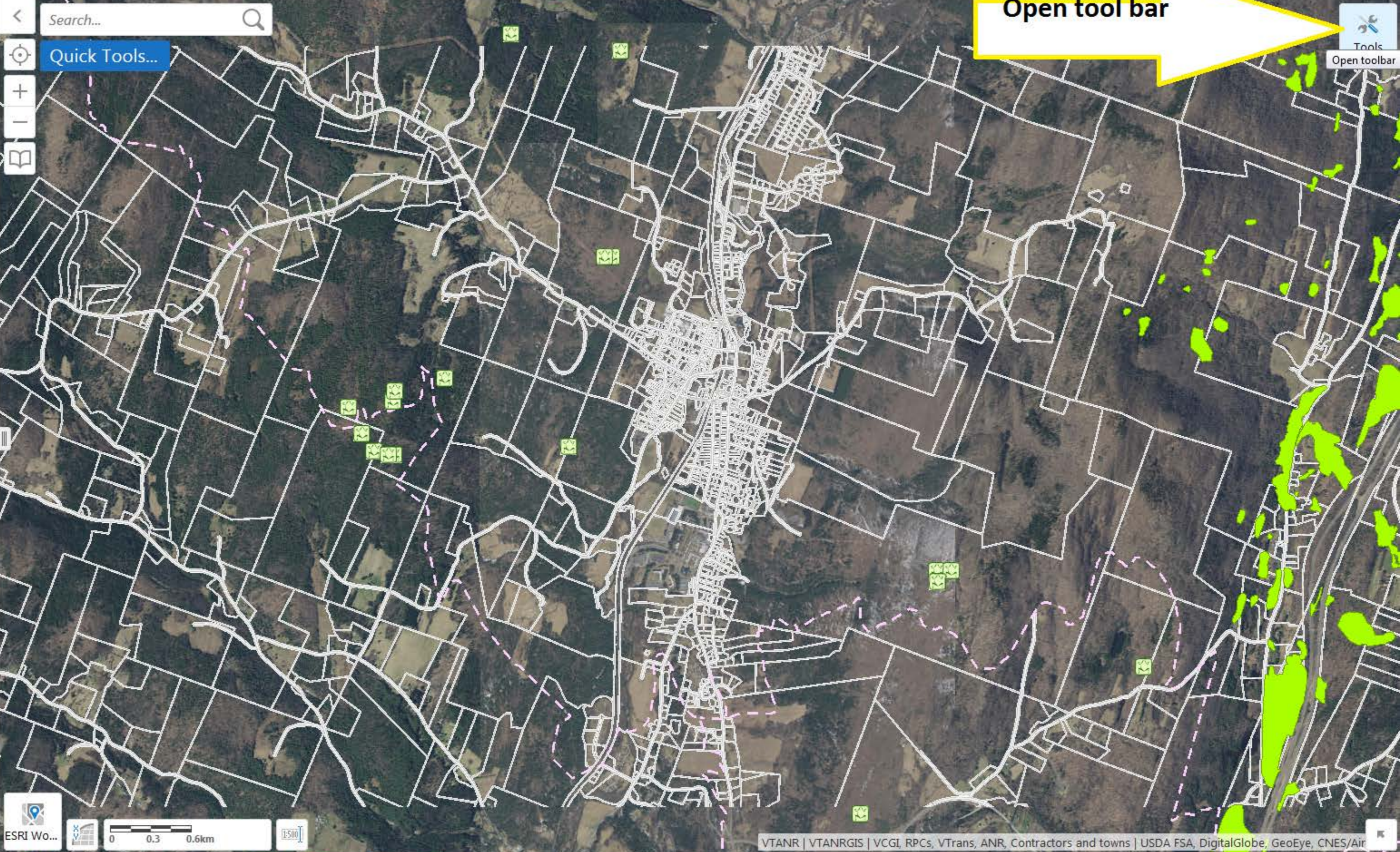
Uploading your own trail (temporary)

Layers

Atlas Layers

Filter Layers... Filter

- Operational Layers
 - Contours - VCGI Map Service
- Atlas Layers
 - Watershed Management
 - Waste Management
 - Stormwater
 - Rivers
 - Geology
 - Forests Parks and Recreation
 - Fish and Wildlife
 - Drinking Water and Groundwater Protection
 - Parcels
 - ANR Basemap Data
- Elevation Data
- Color Imagery by Year
- Vermont Color Orthos (current vintage)



Map toolbar: Imagery Year, Show Layers, Layer Catalog, Add Layers, Upload Data

Click Map Data

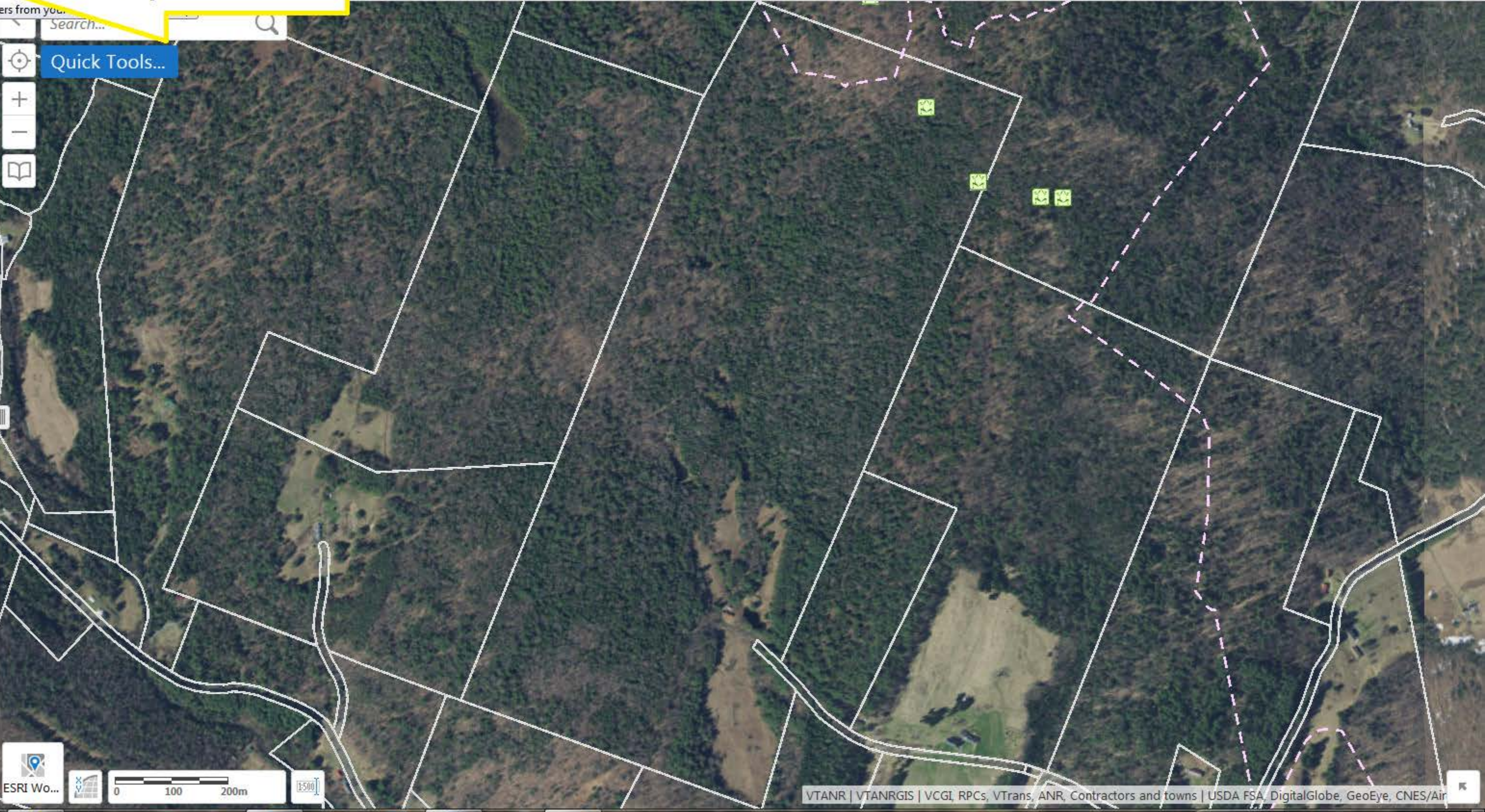
Then Upload Data

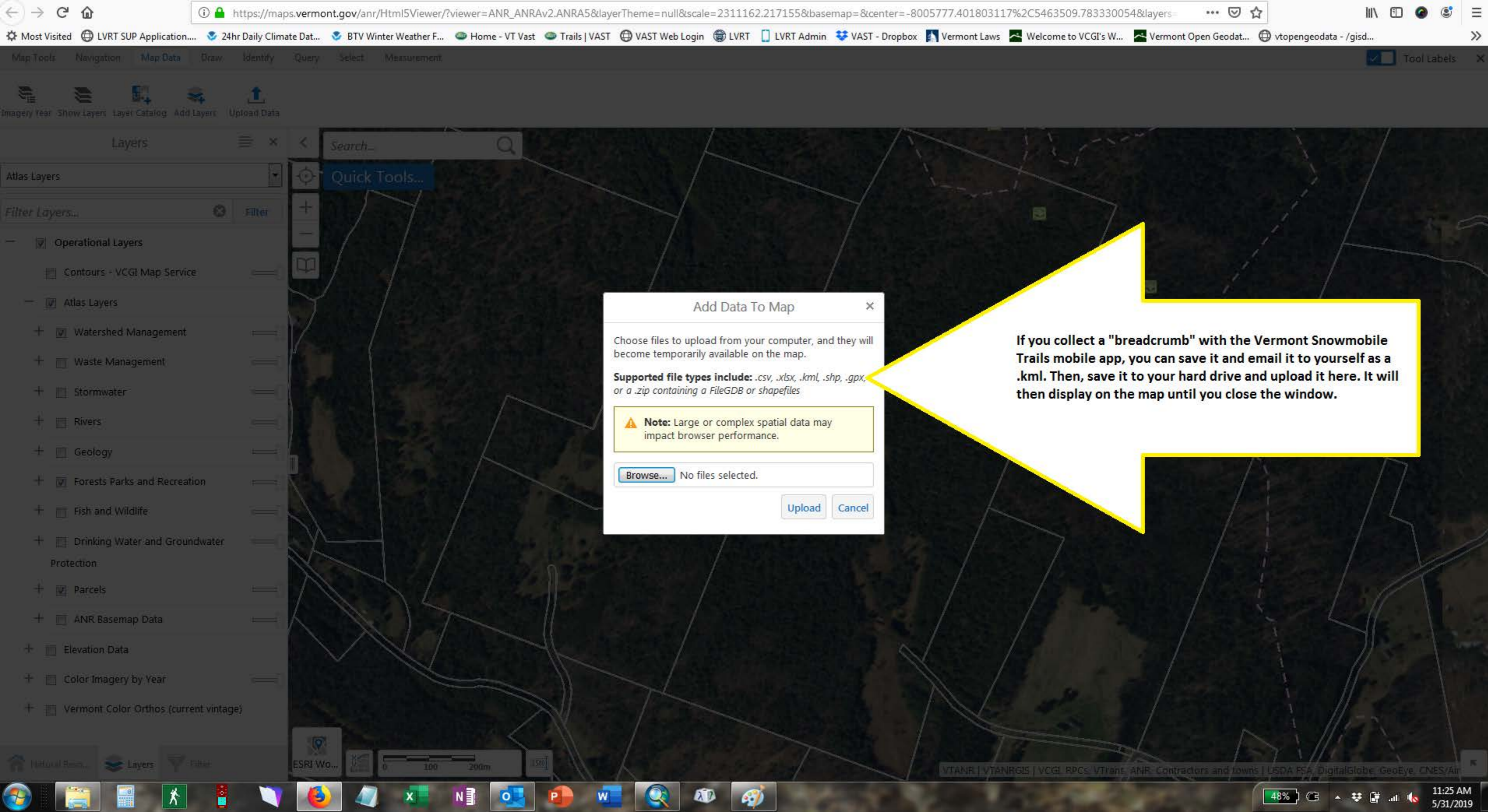
Layers Panel

Atlas Layers

Filter Layers... Filter

- Operational Layers
 - Contours - VCGI Map Service
- Atlas Layers
 - Watershed Management
 - Waste Management
 - Stormwater
 - Rivers
 - Geology
 - Forests Parks and Recreation
 - Fish and Wildlife
 - Drinking Water and Groundwater Protection
 - Parcels
 - ANR Basemap Data
- Elevation Data
- Color Imagery by Year
- Vermont Color Orthos (current vintage)





Add Data To Map

Choose files to upload from your computer, and they will become temporarily available on the map.

Supported file types include: .csv, .xlsx, .kml, .shp, .gpx, or a .zip containing a FileGDB or shapefiles

Note: Large or complex spatial data may impact browser performance.

[Browse...](#) No files selected.

[Upload](#) [Cancel](#)

If you collect a "breadcrumb" with the Vermont Snowmobile Trails mobile app, you can save it and email it to yourself as a .kml. Then, save it to your hard drive and upload it here. It will then display on the map until you close the window.